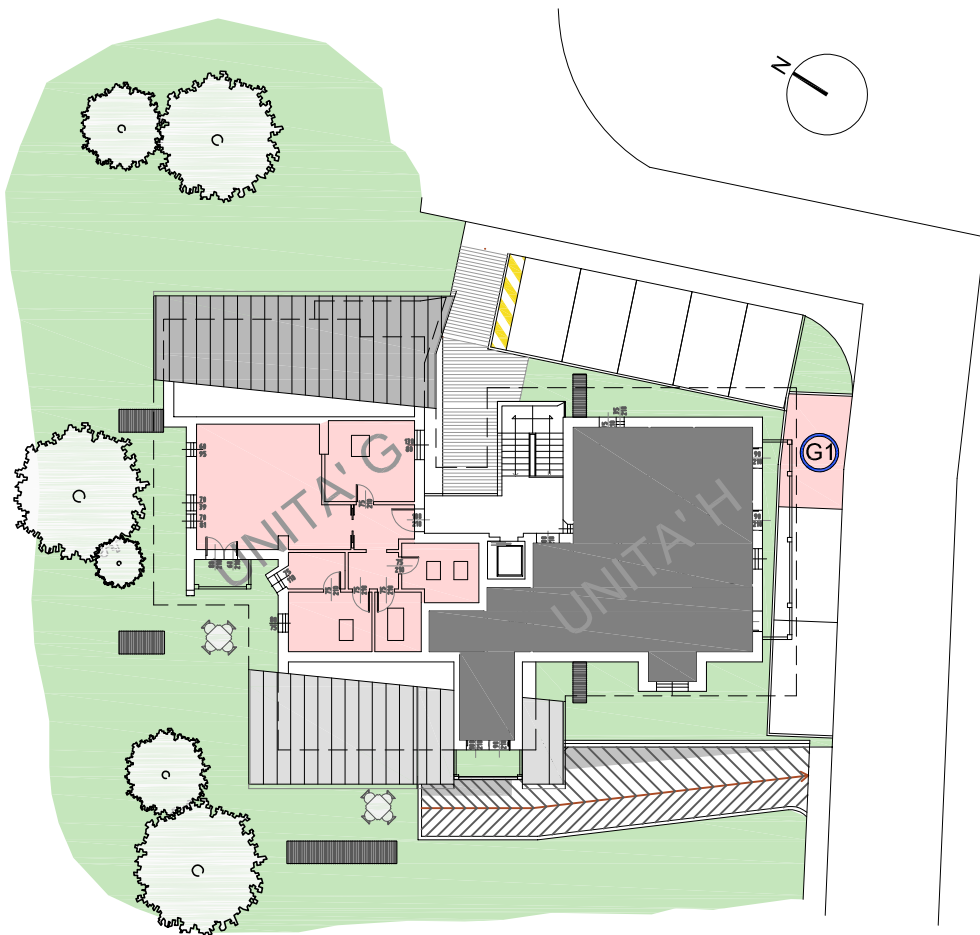


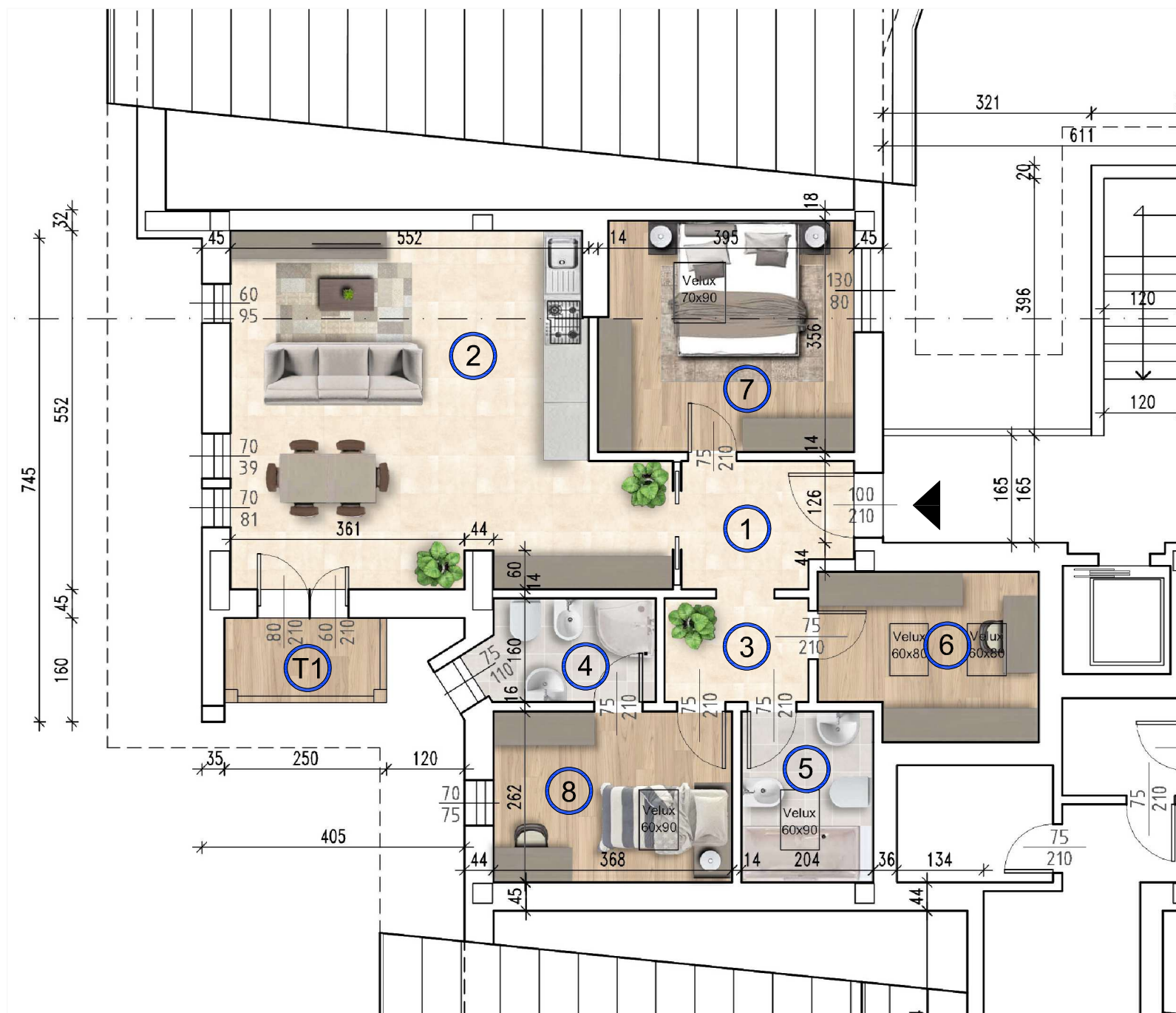
UNITA' G

1	INGRESSO	4.93 mq
2	SOGGIORNO	32.78 mq
3	DISIMPEGNO	3.55 mq
4	BAGNO	4.00 mq
5	BAGNO	5.36 mq
6	RIP.CAMERA	8.30 mq
7	CAMERA 2 letti	14.06 mq
8	CAMERA 1 letto	9.70 mq
T1	TERRAZZA	2.88 mq
C6	CANTINA	9.63 mq
P6	GARAGE	28.86 mq
G1	POSTO AUTO	14.00 mq

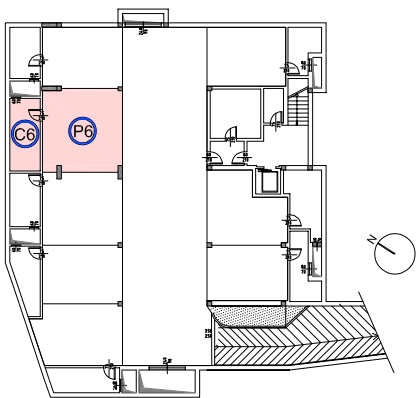


PLANIMETRIA

SUPERFICIE COMMERCIALE 143.41 mq



PIANTA PIANO SECONDO



PIANO INTERRATO



RESIDENZE
BOSCO VERDE

Comune di Rocca Pietore (BL)



GALIAZZO FRATELLI
COSTRUZIONI