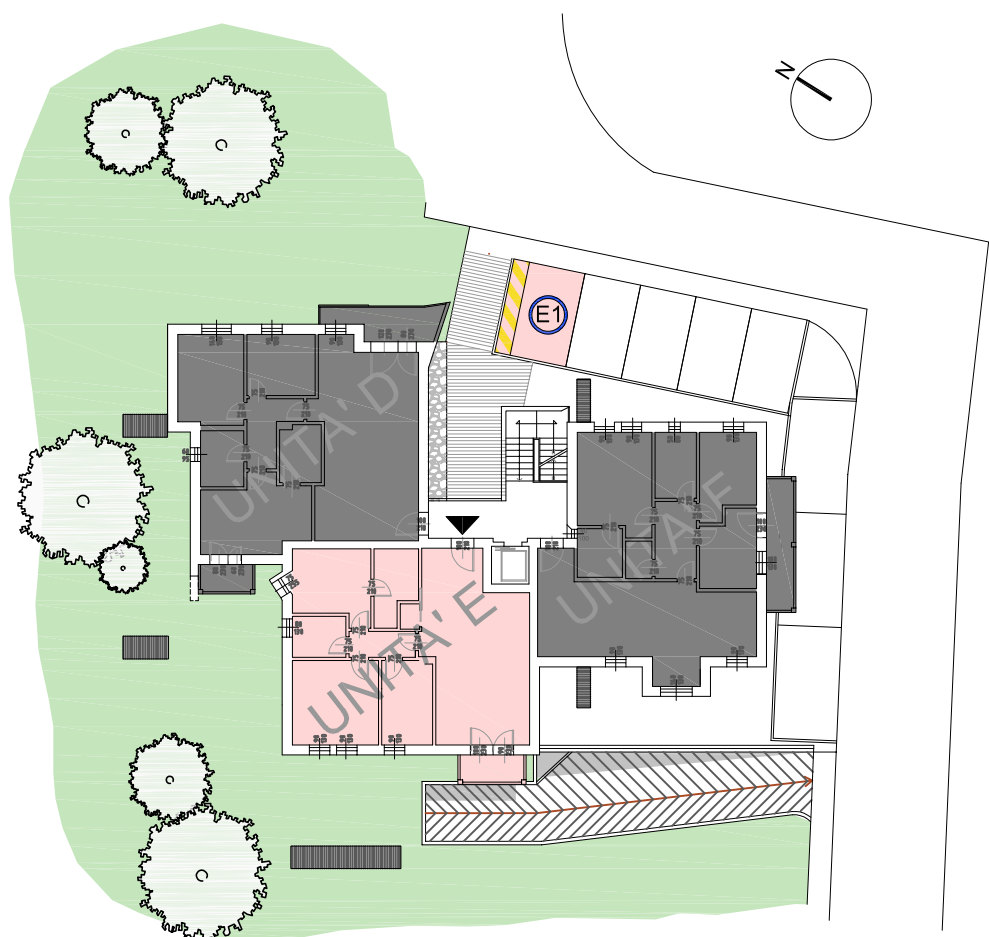


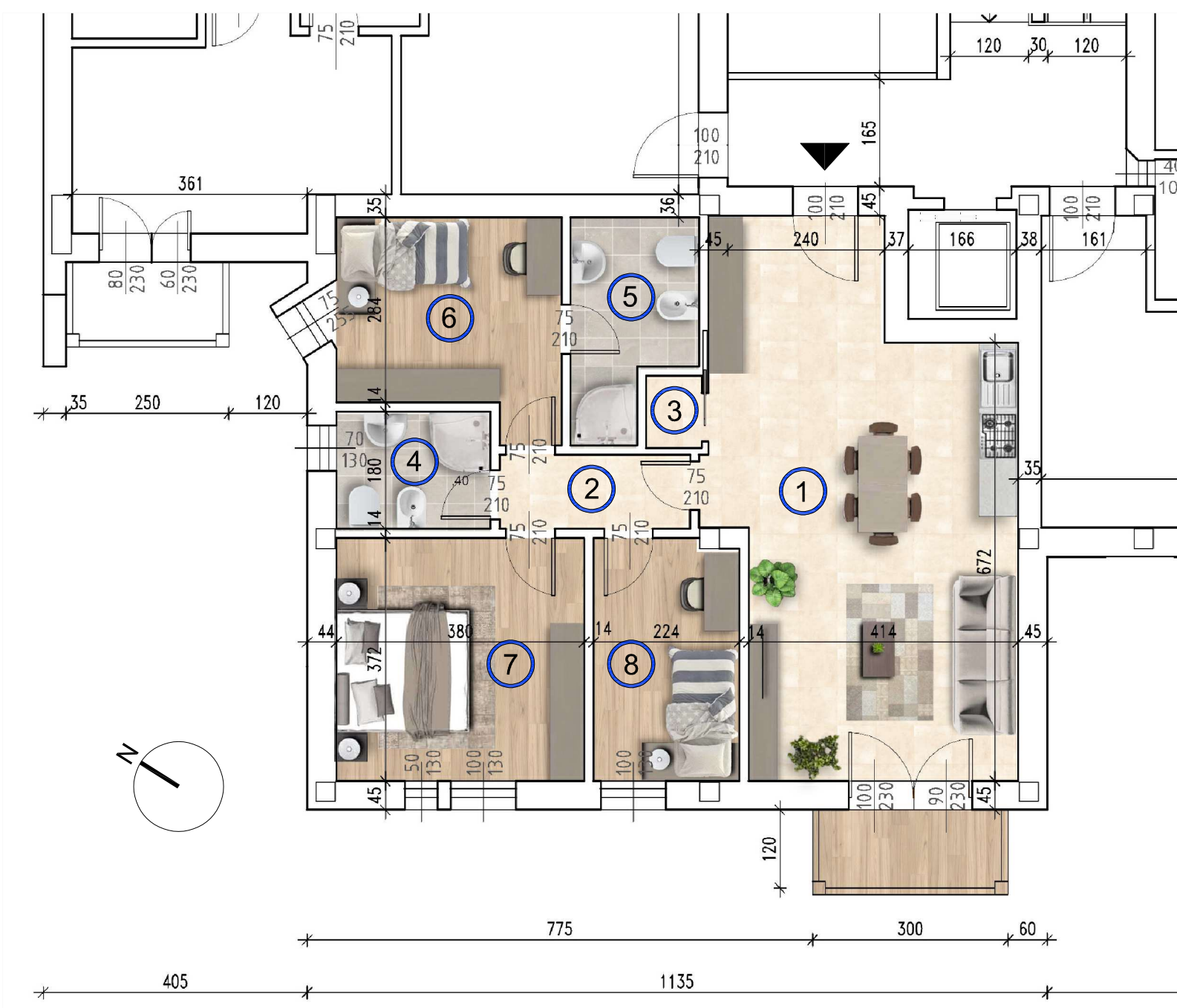
UNITA' E



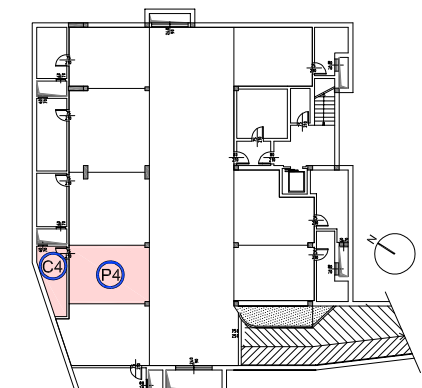
PLANIMETRIA

1	INGR./SOGGIORNO	34.97 mq
2	DISIMPEGNO	3.33 mq
3	RIPOSTIGLIO	0.94 mq
4	BAGNO	4.26 mq
5	BAGNO	5.75 mq
6	CAMERA 1 letto	10.44 mq
7	CAMERA 2 letti	14.17 mq
8	CAMERA 1 letto	8.20 mq
T1	TERRAZZA	3.34 mq
C4	CANTINA	7.14 mq
P4	GARAGE	20.47 mq
E1	POSTO AUTO	12.10 mq

SUPERFICIE COMMERCIALE 142.68 mq



PIANTA PIANO PRIMO



PIANO INTERRATO



**RESIDENZE
BOSCO VERDE**

Comune di Rocca Pietore (BL)



**GALIAZZO FRATELLI
COSTRUZIONI**