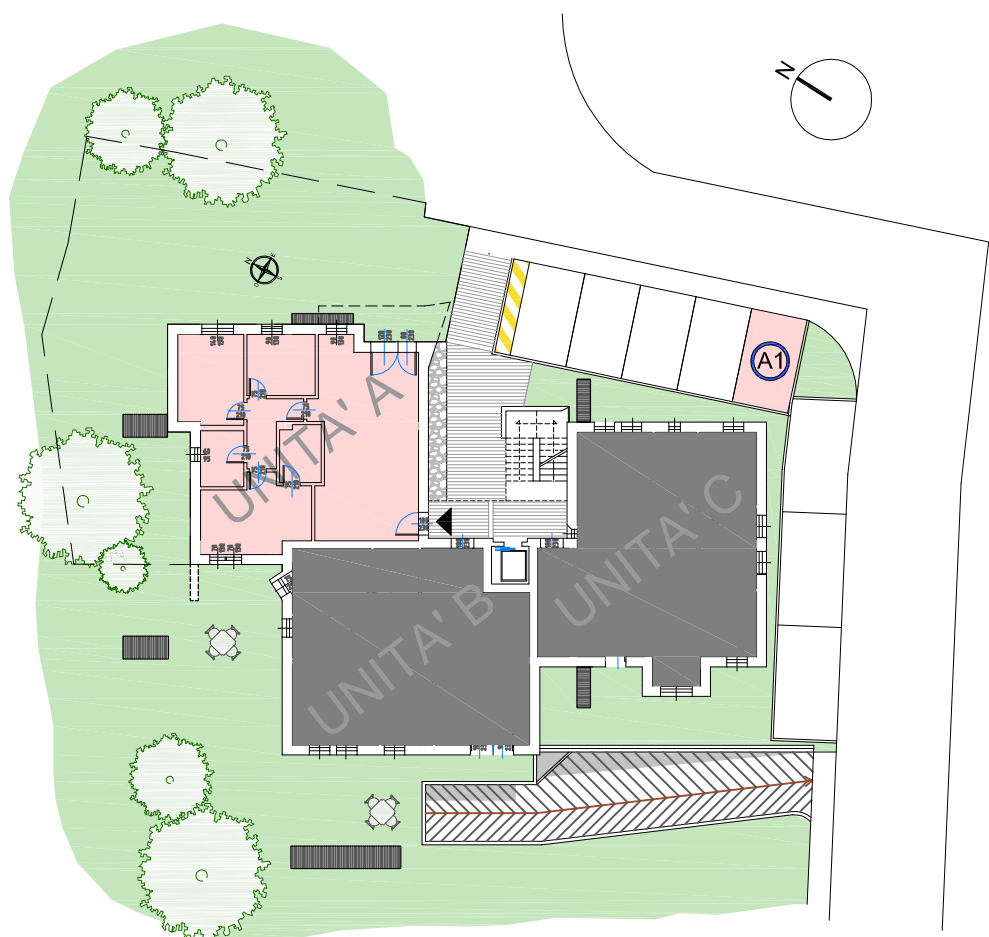


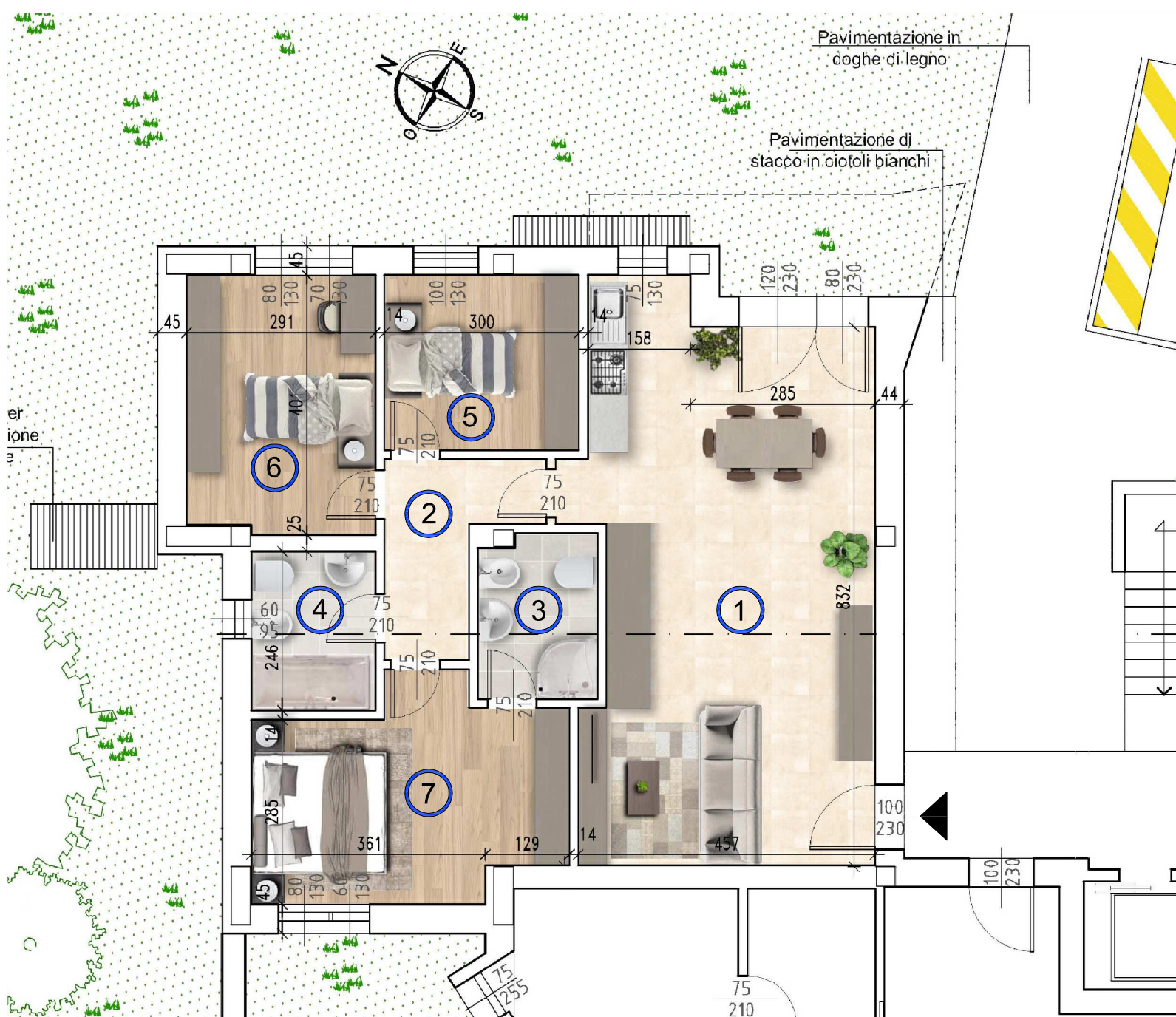
# UNITA' A



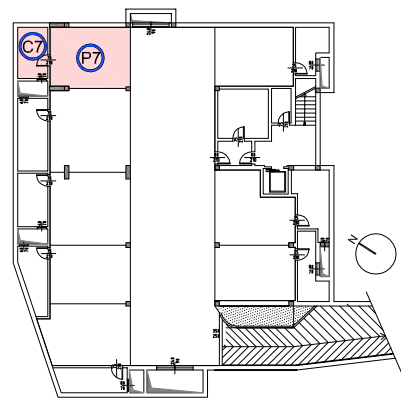
PLANIMETRIA

1	INGR./SOGGIORNO	38.76 mq
2	DISIMPEGNO	5.23 mq
3	BAGNO	4.58 mq
4	BAGNO	4.70 mq
5	CAMERA 1 letto	8.10 mq
6	CAMERA 1 letto	11.52 mq
7	CAMERA 2 letti	14.48 mq
C7	CANTINA	6.80 mq
P7	GARAGE	21.24 mq
A1	POSTO AUTO 1	10.50 mq
	AREA GIARDINO	176.30 mq

**SUPERFICIE COMMERCIALE 185.30 mq**



PIANTA PIANO TERRA



PIANO INTERRATO



## RESIDENZE BOSCO VERDE

Comune di Rocca Pietore (BL)



**GALIAZZO FRATELLI COSTRUZIONI**