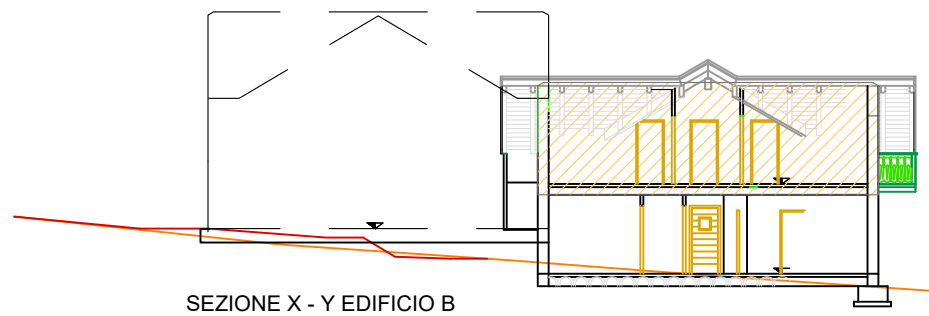
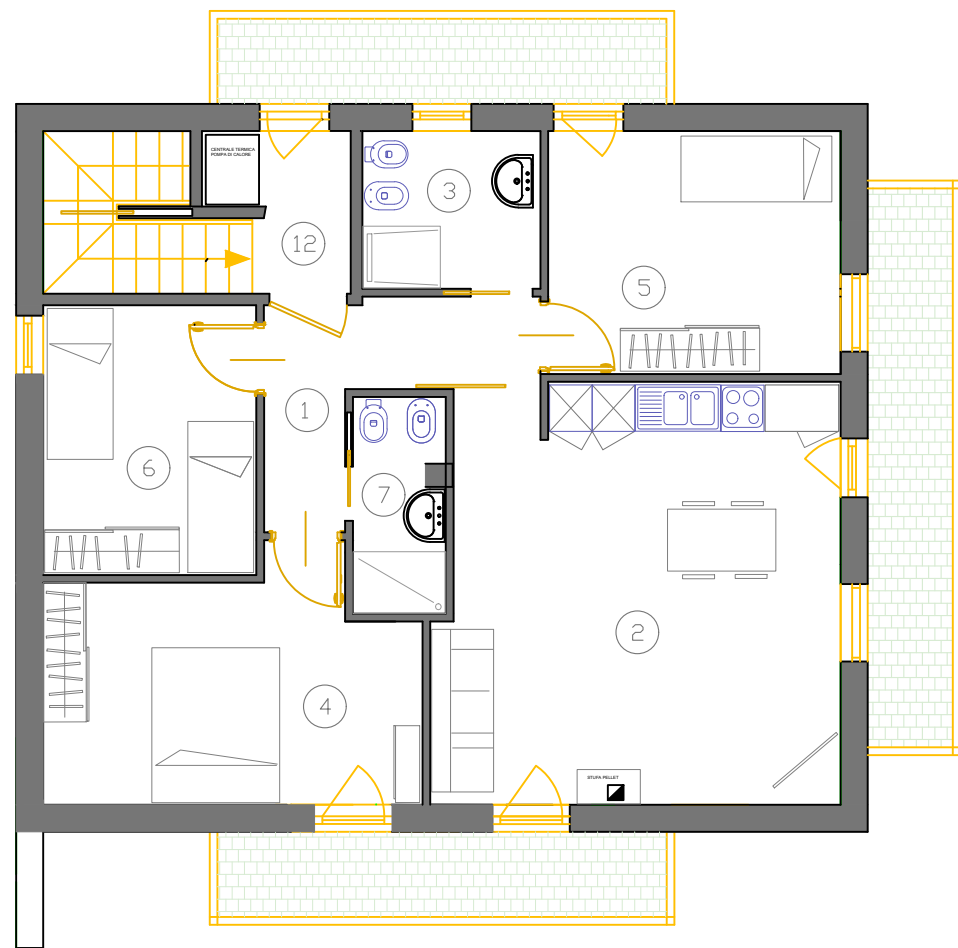


# RESIDENZA MARMOLADA - FALCADE

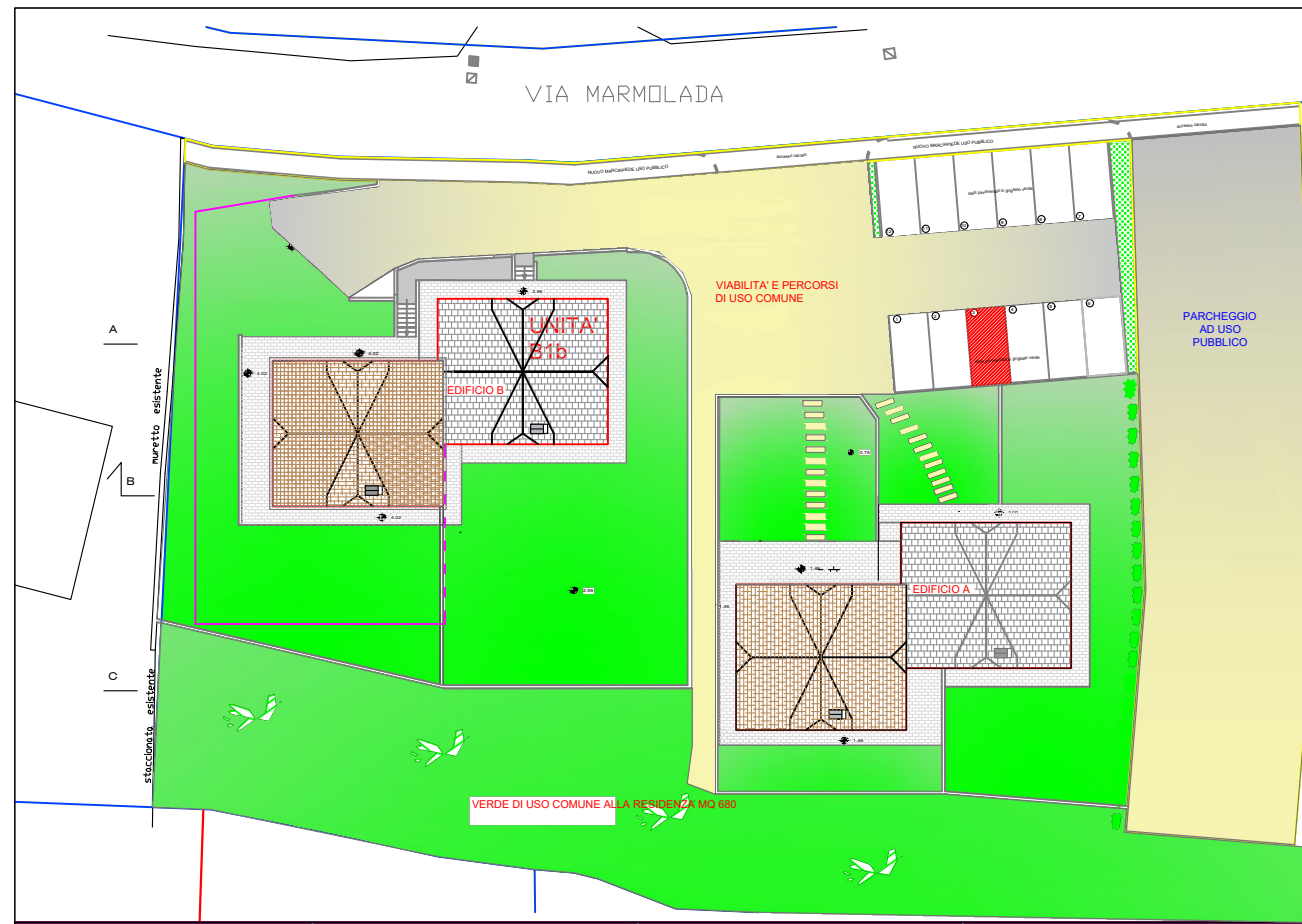
## UNITA' B1b



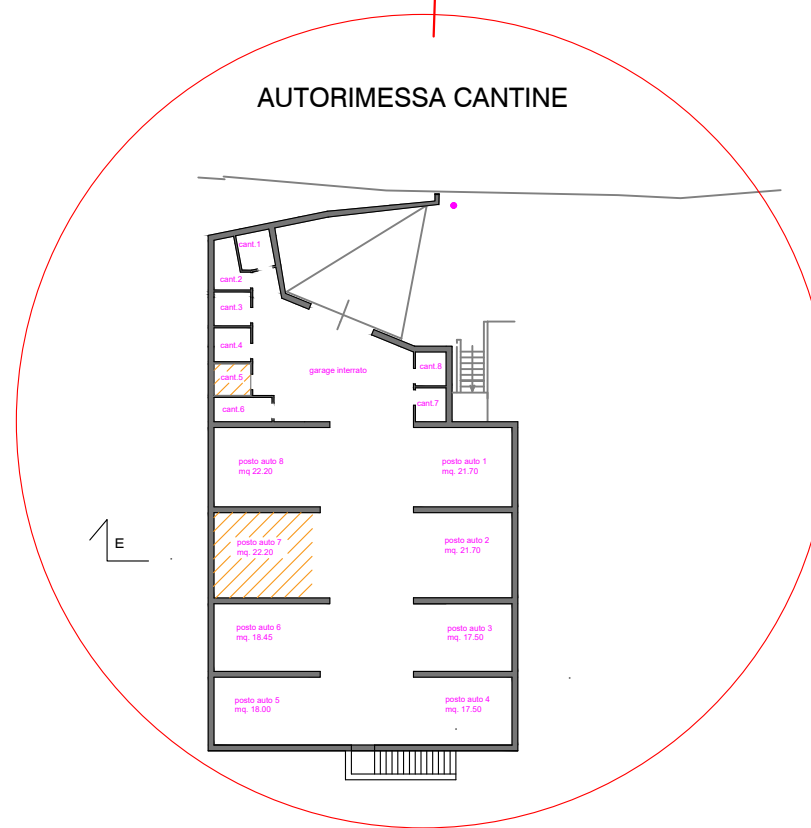
SEZIONE X - Y EDIFICIO B



PIANO PRIMO - Scala 1:100



PLANIMETRIA LOTTO - Scala 1:500



AUTORIMESSA CANTINE

### DATI TECNICI

|                         |            |
|-------------------------|------------|
| Superficie commerciale: | mq.-129.18 |
| 1 - Ingresso            | mq.- 3.90  |
| 2 - Soggiorno -pranzo   | mq.- 30.65 |
| 3 - Bagno giorno        | mq.-4.80   |
| 4 - Camera 1            | mq.-14.00  |
| 5 - Camera 2            | mq.-11.90  |
| 6 - Camera 3 rip.       | mq.-9.60   |
| 7 - Bagno notte         | mq.-3.30   |
| 8 - Garage              | mq.-19.90  |
| 9 - Cantina             | mq.-3.00   |
| 10 - Posto auto esterno | mq.-12.50  |
| 11 - Terrazze           | mq.-23,04  |
| 12 - Vano Tecnico       | mq.-3.30   |

Superficie utile calpestab.: mq.-126.85