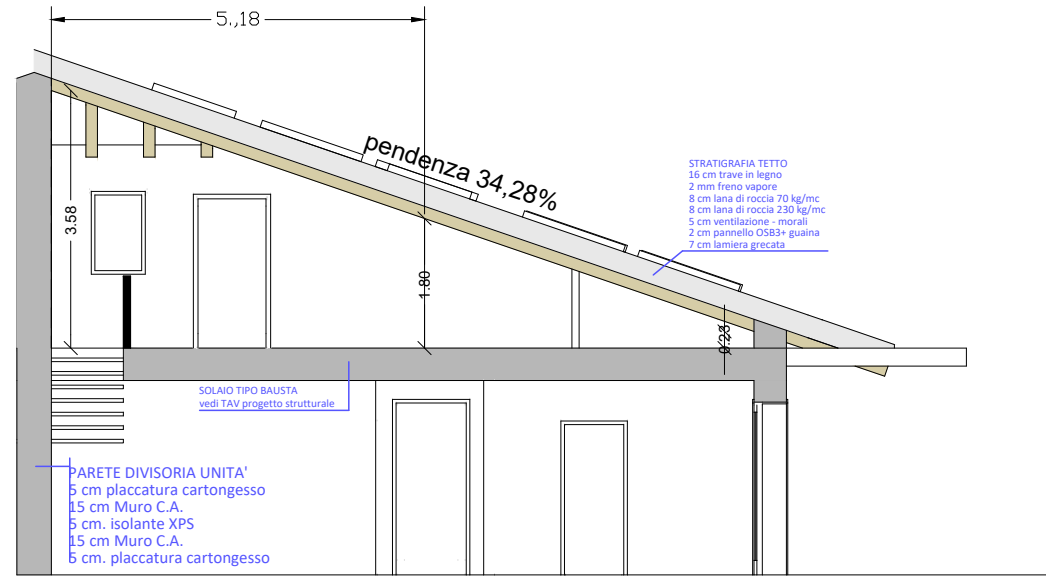
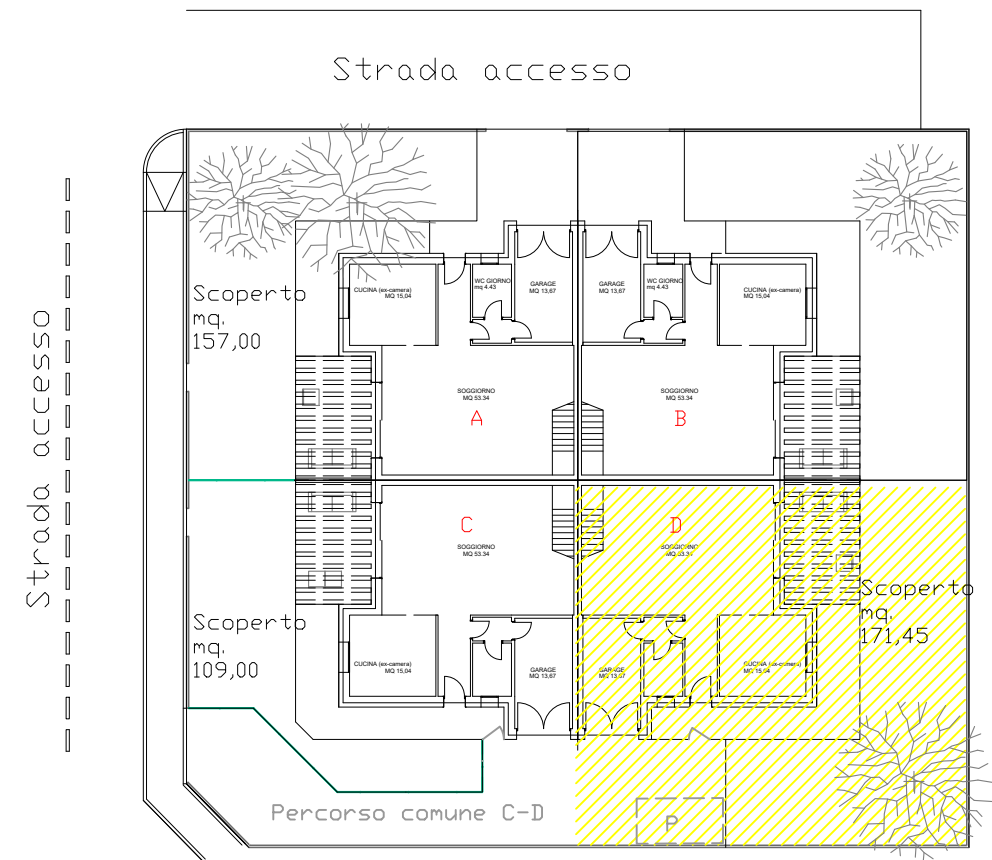


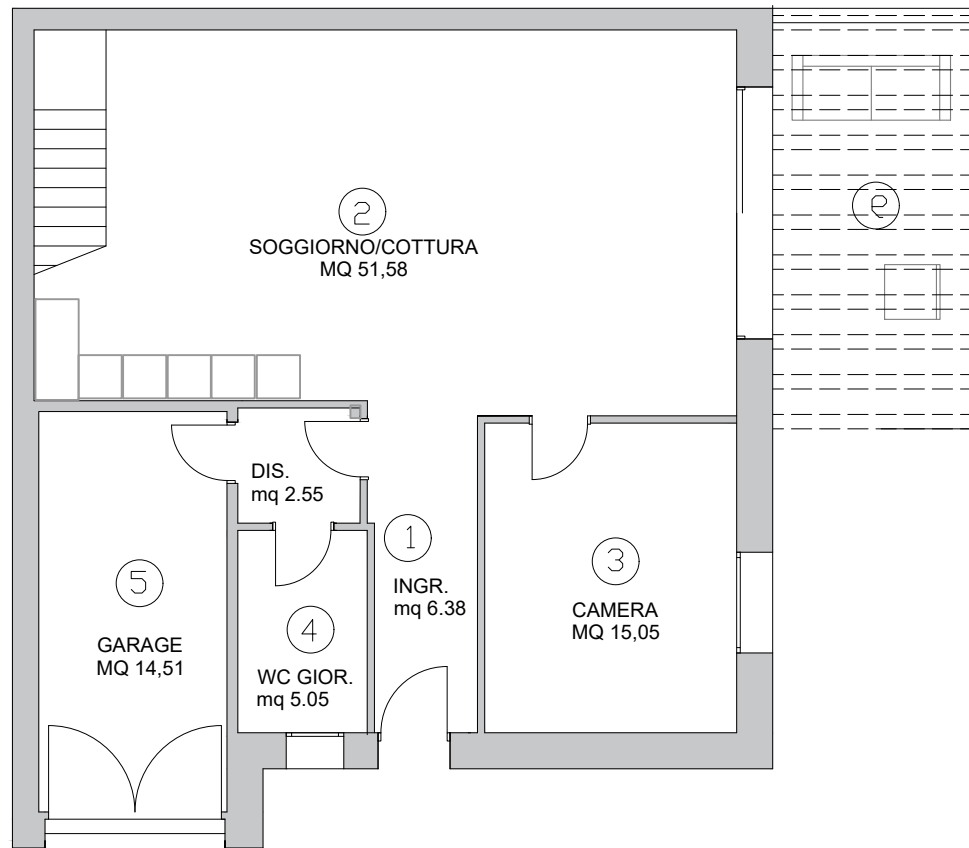
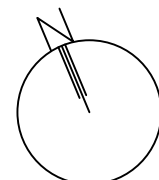
# VILLA QUADRIFAMILIARE LOTTO - 9D



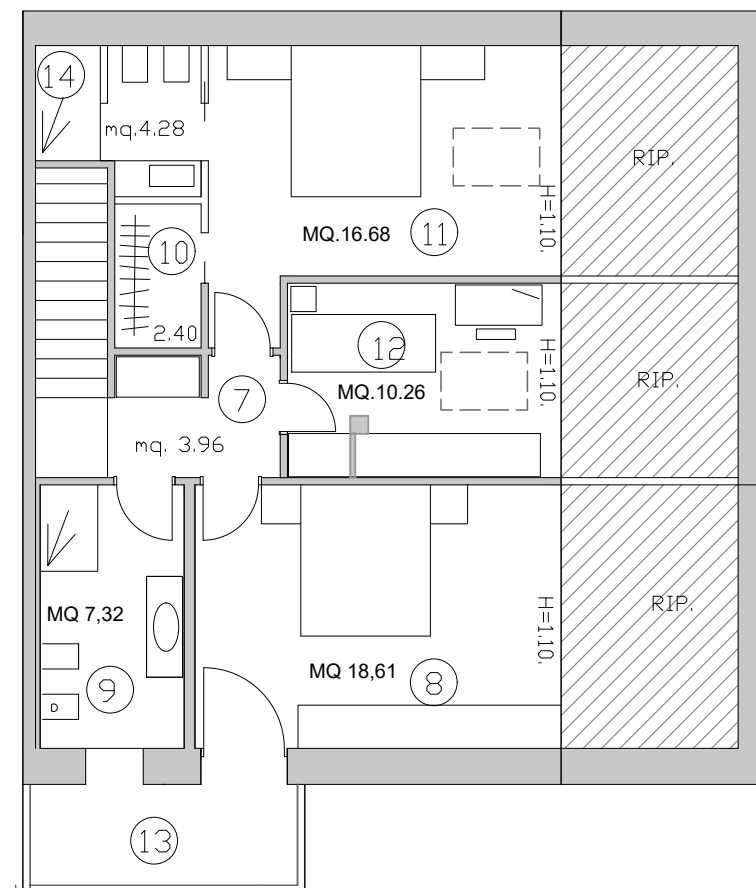
sezione tipo



EDIFICIO QUADRIFAMILIARE



COMPARTO-2 PIANO TERRA - Scala 1:100



PIANO PRIMO - Scala 1:100

## DATI TECNICI

Superficie commerciale:	211.19 mq
1 - Ingresso	6.38 mq
2 - Living/cottura:	51.58 mq
3 - Camera:	15.52 mq
4 - W.C. giorno:	5.05 mq
5 - Garage:	14.51 mq
6 - Portico:	20.37 mq
7 - Disimpegno:	3.96 mq
8 - Sottotetto 1 :	18.61 mq
9 - Bagno:	7.32 mq
10 - Ripostiglio :	2.40 mq
11 - Sottotetto 2:	16.68 mq
12 - Sottotetto 3:	10.26 mq
13 -Terrazza:	5.87 mq
14 - Bagno:	4.28 mq
Superficie calpestabile	158,63 mq
Giardino:	160.00 mq